

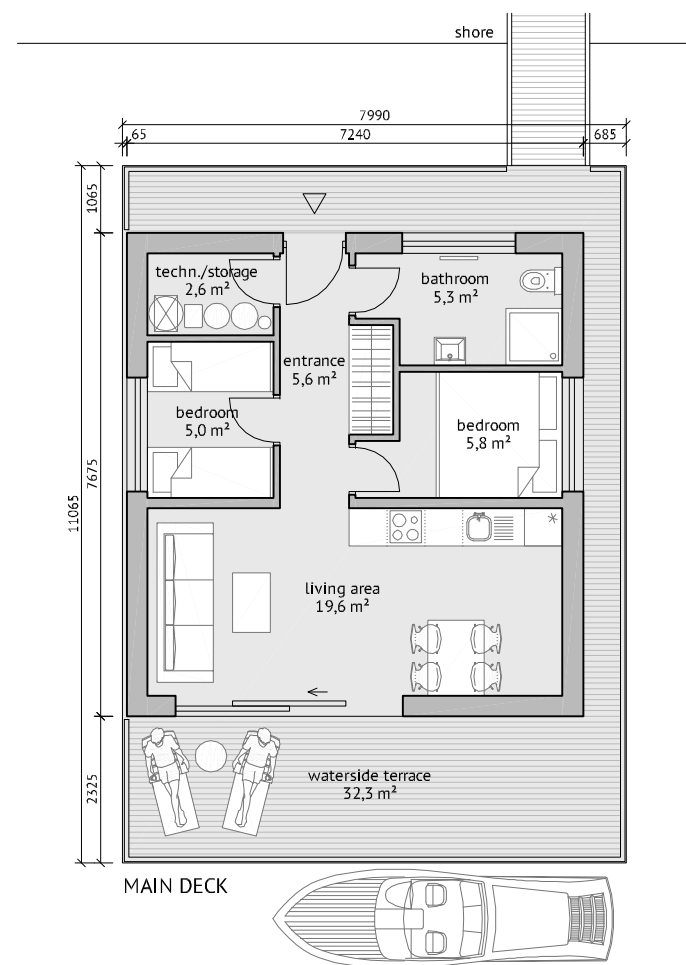
# floating houses



# floating house Yugo

TOTAL AREA	55,6 m <sup>2</sup>
NET FLOOR AREA	43,9 m <sup>2</sup>
WATERSIDE TERRACE	32,3 m <sup>2</sup>

Yugo is a small and efficient floating house ideal for recreation. It can comfortably accommodate up to 8 people. It is a compact yet functional base for all kinds of leisure activities in the nature, suitable for fishermen and all water sports lovers. The living room equipped with a kitchen unit may be interconnected with the terrace through a wide opening. The floating house has a boat mooring place next to the terrace.

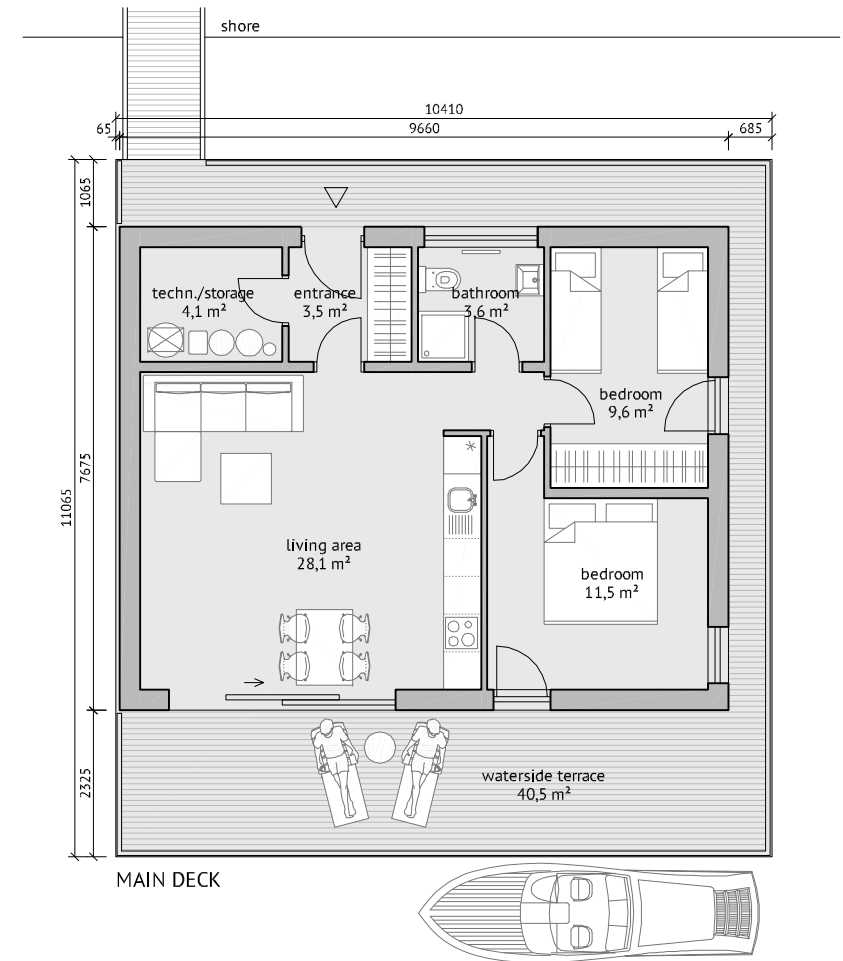




# floating house Bora

TOTAL AREA	74,1 m <sup>2</sup>
NET FLOOR AREA	60,4 m <sup>2</sup>
WATERSIDE TERRACE	40,5 m <sup>2</sup>

Bora is a year round habitable floating house ideal for a family or a group of friends. It is suitable also for more demanding clients. The living area equipped with a kitchen unit has a wide opening towards the water. It is possible to interconnect it with the terrace. The floating house has a boat mooring place next to the terrace.

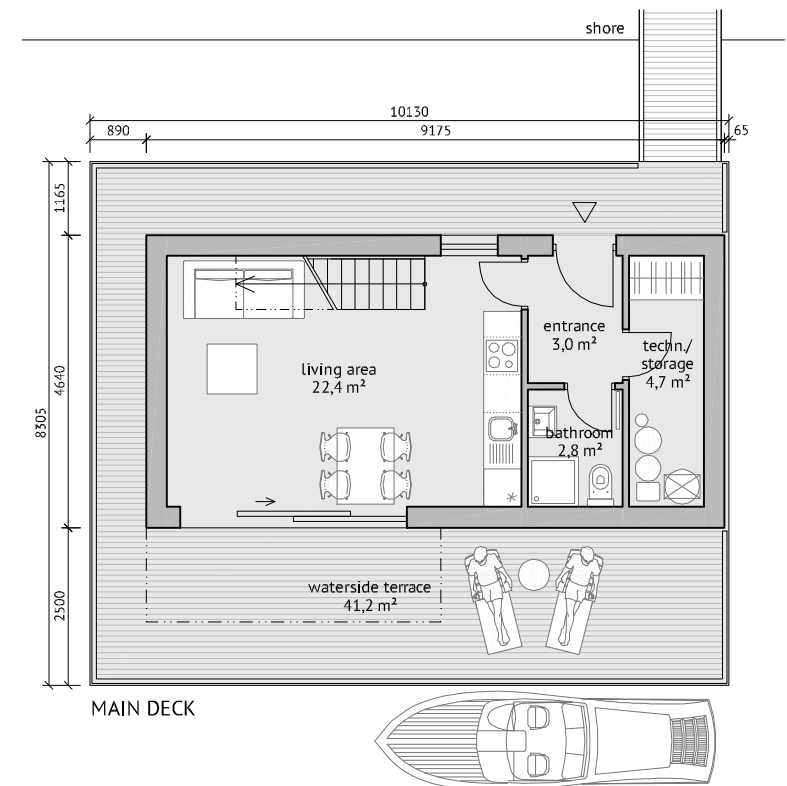
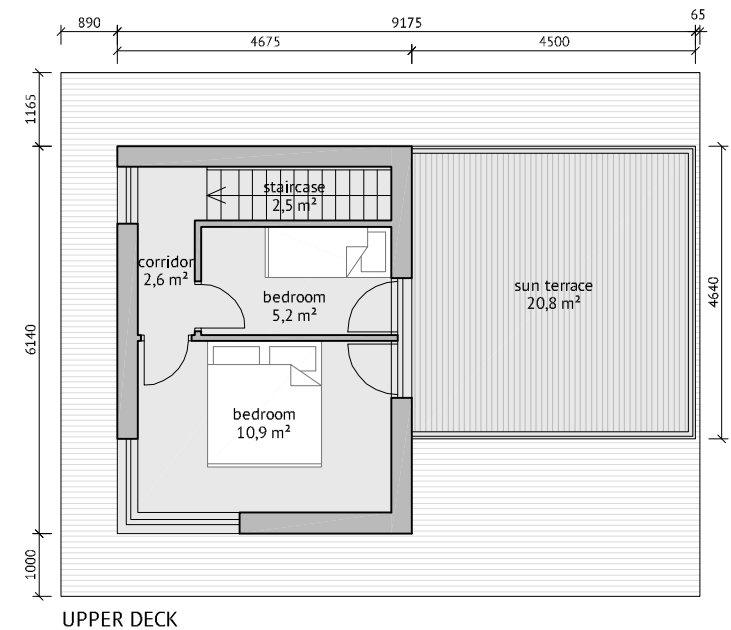


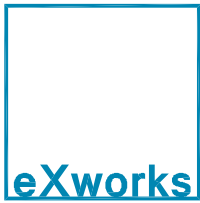


# floating house Alize

TOTAL AREA	71,3 m <sup>2</sup>
NET FLOOR AREA	54,1 m <sup>2</sup>
WATERSIDE TERRACE	41,2 m <sup>2</sup>
SUN TERRACE	20,8 m <sup>2</sup>

Alize is a floating house with two spacious terraces on different levels. The common areas and equipments are located on the main deck. The upper deck may be organised to form two separate rooms or as one generous open space with view on the water and with access to the upper sun terrace. The floating house has a boat mooring place next to the terrace.

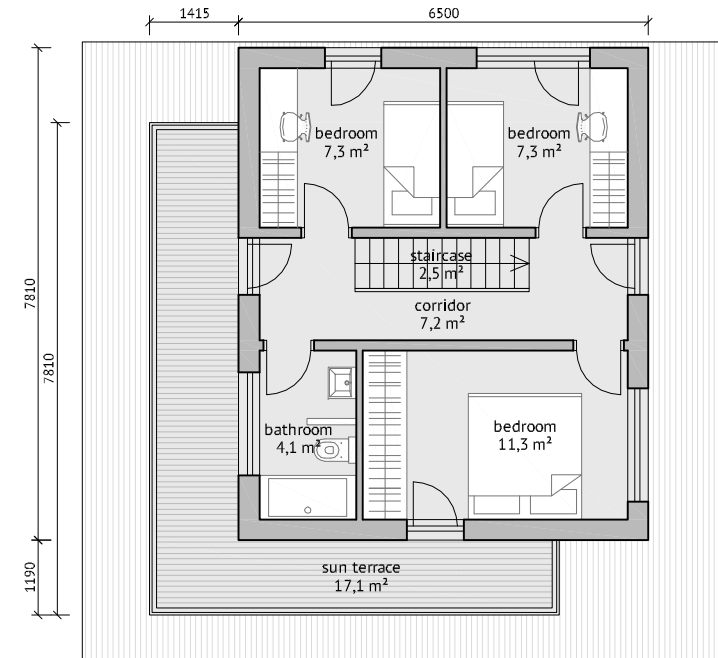




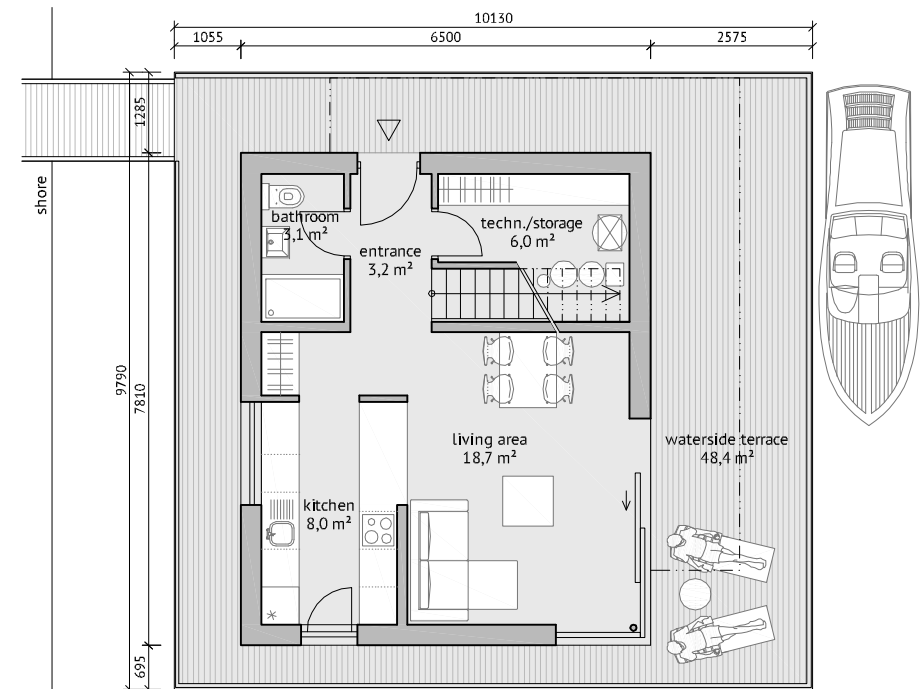
# floating house Mistral

TOTAL AREA	101,5 m <sup>2</sup>
NET FLOOR AREA	78,7 m <sup>2</sup>
WATERSIDE TERRACE	48,4 m <sup>2</sup>
SUN TERRACE	17,1 m <sup>2</sup>

Mistral is a floating house ideal as a permanent residence for a 4-member family. The design of the house offers enough space for a comfortable year round living. Efficient storage spaces and bathrooms are located on both floors. The floating house has a terrace on each level and a boat mooring place next to the main terrace.



UPPER DECK



MAIN DECK



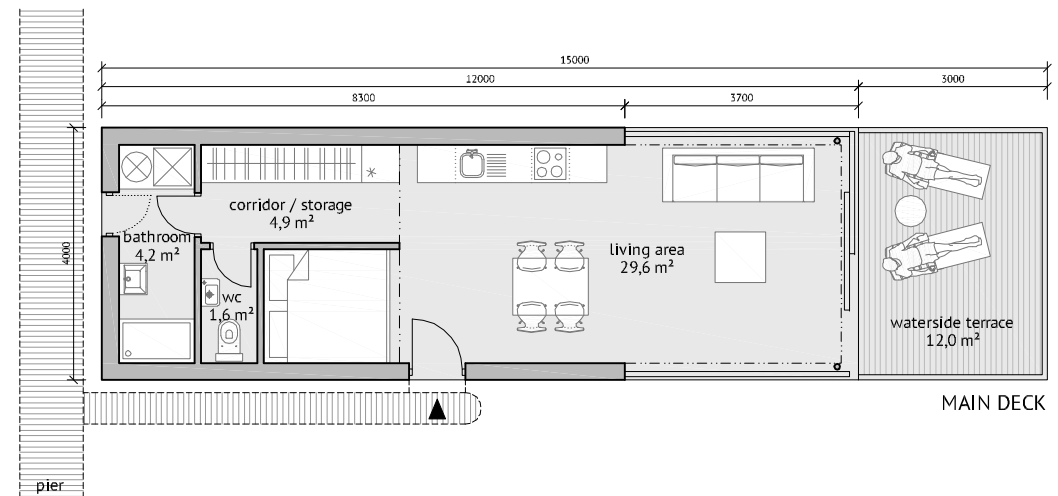
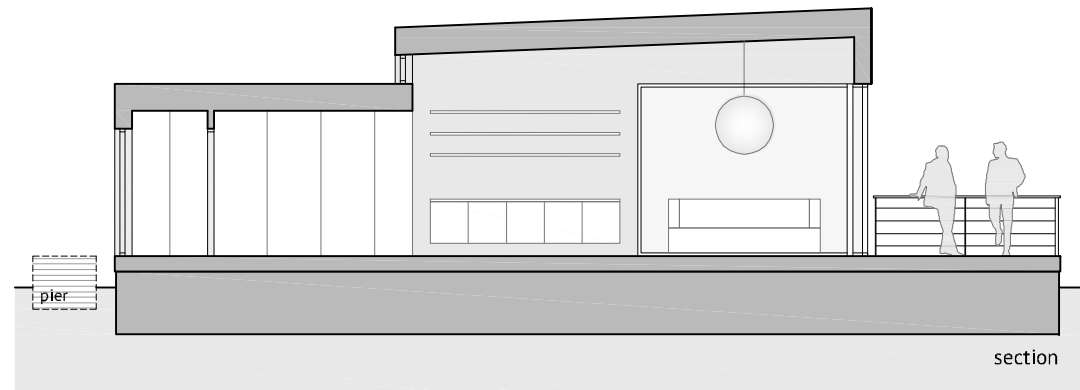
# floating house Marina L

TOTAL AREA	48,0 m <sup>2</sup>
NET FLOOR AREA	40,3 m <sup>2</sup>
WATERSIDE TERRACE	12,0 m <sup>2</sup>

Floating houses Marina are units made to fit to a typical berth in marina. Each can be used as a vacation house or simply as a cosy year long living space for 2 people. The design of the houses is compact and economic, however it offers all the necessary comfort for living. All floating houses have a boat mooring place next to the terrace.



Marina L is the largest model suitable for demanding clients. The living area equipped with a kitchen unit and dining table is higher and well lit. A wide glazed opening towards the terrace opens the interior to the exterior. The service areas are rational, equipped with separate bathroom, toilet and a small dressing.



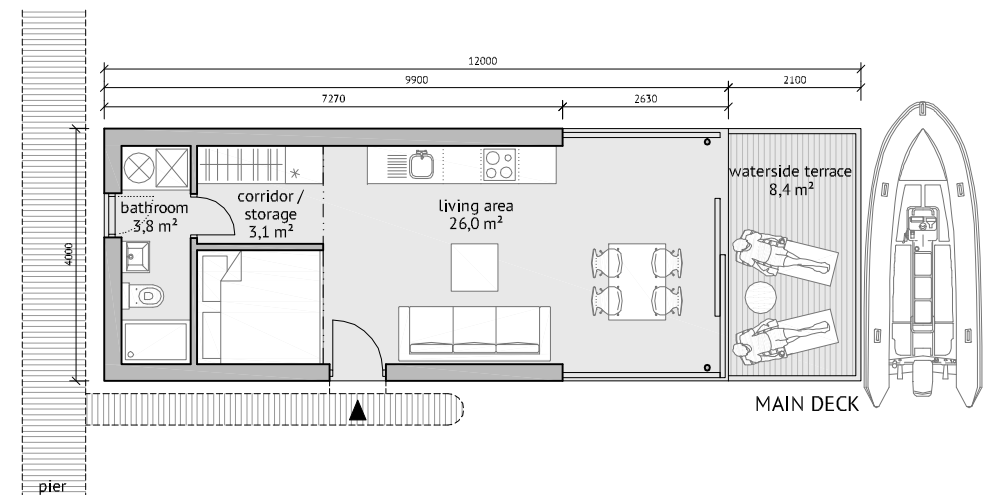
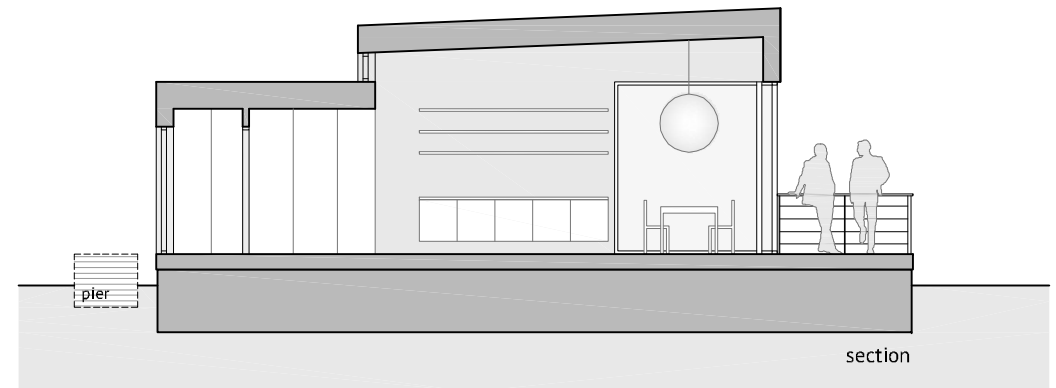


# floating house Marina M

TOTAL AREA	39,6 m <sup>2</sup>
NET FLOOR AREA	32,9 m <sup>2</sup>
WATERSIDE TERRACE	8,4 m <sup>2</sup>

Floating houses Marina are units made to fit to a typical berth in marina. Each can be used as a vacation house or simply as a cosy year long living space for 2 people. The design of the houses is compact and economic, however it offers all the necessary comfort for living. All floating houses have a boat mooring place next to the terrace.

Marina M combines elegant design with rational layout. It is suitable also for smaller berths. The living area equipped with a kitchen unit and dining table is higher and well lit. A wide glazed opening towards the terrace opens the interior to the exterior. The service areas are minimalistic yet rational.



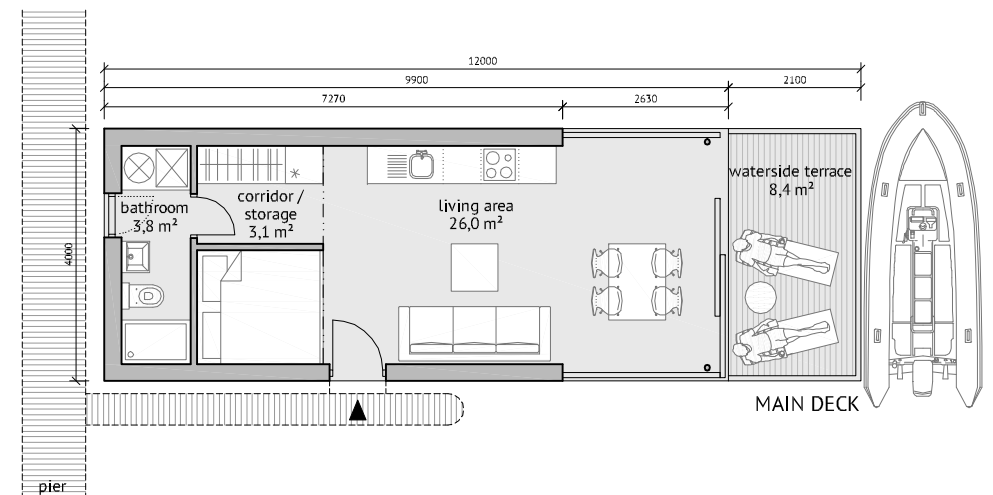
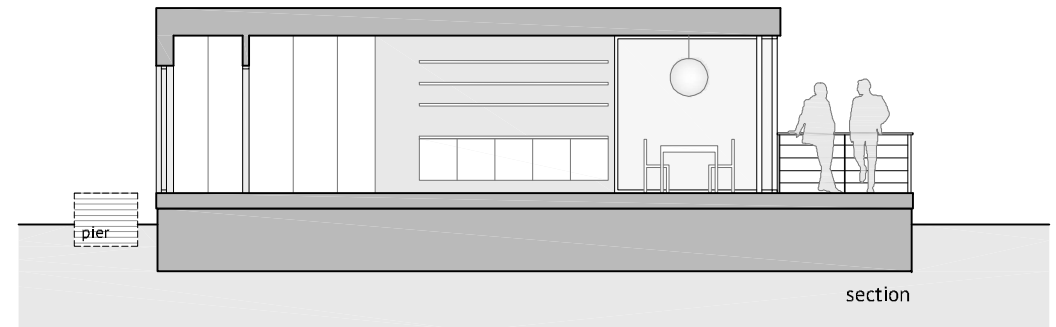


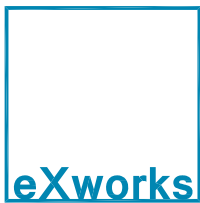
# floating house Marina S

TOTAL AREA	39,6 m <sup>2</sup>
NET FLOOR AREA	32,9 m <sup>2</sup>
WATERSIDE TERRACE	8,4 m <sup>2</sup>

Floating houses Marina are units made to fit to a typical berth in marina. Each can be used as a vacation house or simply as a cosy year long living space for 2 people. The design of the houses is compact and economic, however it offers all the necessary comfort for living. All floating houses have a boat mooring place next to the terrace.

Marina S is the most economic model of this series. The container type of design reacts to a demand of clients who prefer to live on water with minimum initial spendings.





# floating houses by eXworks

## floating houses

All the floating houses consist of a reinforced **concrete pontoon** and a prefabricated **wooden superstructure**. Our houses are delivered on a turnkey basis. Thanks to the close cooperation of suppliers with long experience, we conceive and build your floating house from the pontoon to the final details.

## pontoon

The technology of reinforced concrete shell with a styrofoam core guarantees a high **durability, stability** and **unsinkability**. The pontoon is resistant to mechanical and weather impacts as well as freezing-in and salt water. Minimum life expectancy is 50 years.

The pontoon is maintenance-free for decades. First pontoons built in the seventies are floating until these days without any maintenance.

## building technology

The houses are composed from **prefabricated panels** assembled directly on the pontoon platform. Prefabricated panel technology allows a **quick and precise construction**; at the same time it protects the site from negative impacts of the construction activity.

## superstructure

The floating houses are conceived as **year long habitable** houses.

The superstructure is built as a **prefabricated wood frame construction** with internal insulation. The house has diffusion open walls, that means the house is breathing. There is an installation layer for water and electric installations on the interior side. The whole structure is protected with a continuous hydro-insulation envelope.

The ventilated **facade** is made of maintenance free cladding - siberian larch or fibre cement in standard.

The **roof** construction consists of wooden I-beams with internal thermal insulation. The roof is covered with watertight PVC hydro-insulation. Rainwater is drained by downpipes under the facade cladding.

Aluminium **windows** with triple glazing and microventilation provide a good indoor climate. Aluminium exterior blinds guarantee not only indoor climate regulation but safety as well.

**Interior walls** are made of wood frame construction with internal acoustic insulation. They are covered with a double OSB and plasterboard cladding. As a result, the walls are rigid and have good acoustic characteristics. It is possible to fix shelves and decorations anywhere on the wall. The interior walls are painted white or covered with tiles in the kitchen and the bathroom.

**Floor** construction with a 250 mm layer of thermal insulation provides high thermal comfort in the interior. Coverings are made of large-scale laminate flooring.

Acacia wood **terrace** decking is maintenance free and resistant to moisture and microorganisms even without any additional treatment. Terraces are fitted with a stainless steel wire rope railing with a wooden handle bar. Access to water and moored boats is through gates in the railing.

## technology

The house can be connected to electricity, water and sewage from the shore or it can be conceived as energy self-sufficient home.

Thermal comfort is ensured by infrared floor heating system.

## higher standard

It is possible to adjust the standard of the floating house according to client's requirements.

### Low-energy or passive standard:

- wall construction with higher thermal resistance
- ventilation with heat recovery
- windows and doors for passive houses

### Other options:

- heat pump
- ceiling cooling system
- heating stove
- jacuzzi
- electronic security system and video doorman
- backup power source
- lowered terrace with a better access to water and moored boats
- boat garage

## © AUTHORS

architecture: Ing. arch. Mária Klaučová, Ing. arch. Diana Šajdová  
naval architecture: Ing. Peter Mandl, AMRINA  
web: [www.exworks.sk](http://www.exworks.sk)

ALL RIGHTS OF THE PROJECT ARE RESERVED.

It is sent to you for personal use authorized in writing by our firm.

Copy or inspection by a third party or any work other than authorized is forbidden and will be considered an infringement of these rights.